

STEPPING Stones

November 2012

MARYLAND ASSOCIATION OF NONPUBLIC SPECIAL EDUCATION FACILITIES

Inside This Issue...

- 2 From Our President
- 3 Celebrating Student Success
- 5 School News
- 11 Upcoming Events



Maryland **A**ssociation of **N**onpublic
Special **E**ducation **F**acilities

Phone: (410) 938-4413

Fax: (410) 938-5130

Email: mansef@aol.com

Website: www.mansef.org

Tania DuBeau - President

Mary Schaefer - Vice President

Stephanie deSibour - Secretary

David Stone - Treasurer

Dorie Flynn - Executive Director

FRIENDS OF MANSEF: NEW PARENTS GROUP TO ADVOCATE FOR SCHOOLS, EDUCATION AND SERVICES

Thousands of Maryland families rely on MANSEF schools to provide their children with services. They are personally invested in the many issues and challenges faced by nonpublic schools, and directly benefit from their successes. Who better to speak in support of these schools than parents of Maryland's special needs children?

With that in mind came the idea for the Friends of MANSEF – a parent group created to promote nonpublic schools that provide education and services to Maryland's children and youth with disabilities. Members represent a wide geographic range, with children of varying ages and needs.

The Friends of MANSEF serve in an advisory capacity to the MANSEF Board of Directors to address matters of family involvement and communication and act as a core group of advocates to help educate government leaders, policy makers and members of the public about the educational needs of children with disabilities. Legislative advocacy and outreach are key for maintaining nonpublic schools; there is great value in having

parents bring their individual stories and experiences to the table.

"We are gratified by the commitment that the parents have to the MANSEF schools and their passion for advocating for their children's education," says Dorie Flynn, executive director of MANSEF. "The Friends of MANSEF serve as the face and voice of our schools' special needs students."

Spread the word! If you have parents who might be interested in joining the Friends of MANSEF, please have them call or email Dorie Flynn at 410-938-4413/mansef@aol.com.



*Jan Wintrol, Executive Director of Ivymount School
& Laura Russell, Co-Chair of the Friends of MANSEF*

Mission Statement

MANSEF is the collective voice and essential resource for the nonpublic special education community to champion the continuum of services for students with special needs.

A MESSAGE FROM THE PRESIDENT



Heading into this school year, the MANSEF Board refocused attention on strengthening its commitment to fulfilling our newly written mission. The mission's words, "collective voice," "essential resource," and "continuum of services" serve to guide the priorities of the association and the Board. With many stakeholders in mind, MANSEF will make it a priority to **advocate for tuition increases for nonpublic special education schools, to continue to promote a collaborative relationship with the Maryland State Department of Education (MSDE)** during these times of change, to **enhance the value of membership** in the association, and to **engage families and the Friends of MANSEF to advocate** for Maryland's children with special needs.

As we work through these times of economic challenges, it is even more critical that the special education community stand together in voicing the need for continued access to the continuum of services for students with special needs. It is through the combined efforts of MSDE, local school systems, MANSEF member schools, families, and community advocates that the hopes and dreams of children across the state can become a reality. These goals can only be achieved if state legislators show their support through an increase in tuition rates for nonpublic special education schools in the upcoming budget. **What can you do?** Join us in telling our legislators about MANSEF and the valuable role its schools play in providing a continuum of services in the state of Maryland.

The Maryland State Department of Education has recently undergone a significant change in leadership. However, it is important to recognize that the governing goal remains the same; the new State Superintendent of Education, Dr. Lillian Lowery, strives to maintain Maryland's recognition as the top ranked school system in the nation. As MANSEF continues to bolster its relationship with MSDE and the key leaders, it is essential to foster their awareness that MANSEF member schools have been, and will continue to be, significant for maintaining Maryland's current standing. **What can you do?** Join us in celebrating the state's four years as the #1 school system in the nation and in touting the critical role our schools played in making that accomplishment possible.

With membership comes the benefit of networking with colleagues, sharing resources, and creating the strength of a collective voice. Adhering to state and federal regulations and policies, being accountable to local schools systems and MSDE, implementing best educational practices, and developing relationships with stakeholders are all vital to the success of MANSEF schools. Learning the skills and building on strengths to accomplish these expectations can prove to be a challenge. MANSEF continues to strive to find ways to best support its members in order to ultimately best serve the students in their care. **What can you do?** Join us as a member of MANSEF and in working collaboratively with member schools to strengthen our nonpublic special education community.

The importance of empowering families to be actively involved in their child's education is immeasurable. So that families can make the best educational decisions, they must become knowledgeable about the existence of nonpublic schools and the ways in which these schools may be able to meet their child's needs. Families can only make well-informed decisions if they are fully aware of the entire continuum of educational settings available for their child. The Friends of MANSEF, made up of parents of special needs children who currently attend or have attended nonpublic special education schools, is actively engaged in increasing the visibility and awareness of MANSEF schools to more Maryland families. **What can you do?** Join them in their efforts to tell other parents about MANSEF's role in completing the continuum of special education services available in the state of Maryland.

On behalf of the MANSEF Board of Directors, I thank you in advance for joining us in striving to fulfill our mission to serve the children of Maryland.

Kind regards,

A handwritten signature in cursive script that reads "Tania DuBeau". The ink is dark and the signature is fluid.

Tania DuBeau
MANSEF President

MANSEF CELEBRATES STUDENT SUCCESS

Auburn School

Torben Stehr, a second grader, has benefited from the Auburn Social Thinking and Learning curriculum. Torben had difficulties staying focused on his work and attending to non-preferred conversations. When frustrated, he expressed intense feelings by yelling. Torben has become an expert in Social Thinking and Learning. He focusses in class for extended periods of time. Torben assesses a social problem and suggests thoughtful solutions. When he overreacted to little problems, he often created new ones. Now Torben will say, "I'm having a glitch, right? I'll stay calm." Torben's success has made him a model Auburn student!



Torben

Landmark Theatre in Harbor East.

The Forbush School at Prince George's County

Kyle, a transition-aged student at The Forbush School at Prince George's County, is the epitome of a dedicated worker. The school recently purchased a vending machine to allow the students to stock and practice money and purchasing skills. Kyle, on the other, hand is responsible for filling the vending machine with the transition team. He fills the vending machine two times a

week, takes an inventory of the items in the vending machine stock cabinet weekly, and records them on an inventory list. He also compiles a list of items we need and delivers it to our resource specialist to purchase them. Kyle's dedication to the vending machine shows the perseverance he will have once he exits our program and seeks employment. Keep up the great work Kyle!

Sean

The Foundation Schools

Nathalie, a junior at The Foundation School of Montgomery County interned at The Sunflower Bakery. The staff was so impressed with her work that they recommended her for their Pastry Arts Program, a highly competitive six month intensive training program. Nathalie was one of three applicants accepted to the program. Nathalie was awarded a Mary Jane Kennelly Scholarship through The Foundation Schools that will allow her to take advantage of this incredible opportunity. Nathalie is a positive role model at FSMC where she is on the Honor Roll, has earned over 290 Student Service Learning hours and was awarded the Presidential Service Award.

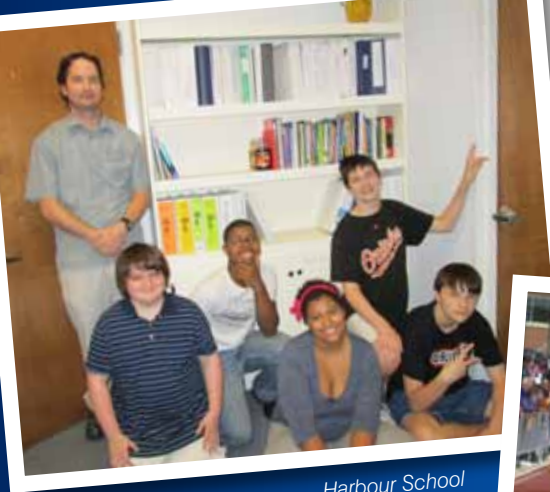


Kyle

(410) 938-4413
www.mansef.org



STUDENT Success



Harbour School

The Harbour School

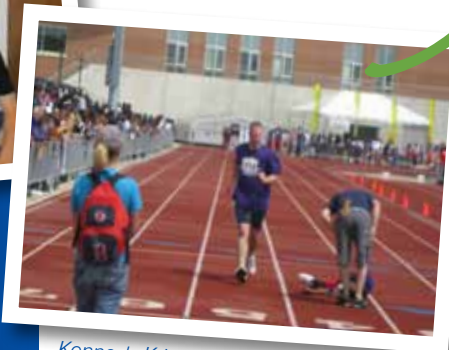
Woodshop students at The Harbour School at Baltimore successfully designed and constructed a bookcase for the office of the Program Director. The students measured the space for the bookcase. They designed the shelving and cabinet units and constructed the bookcase. After sanding several times, they painted it to match the other furniture in the office. They also added the hardware to latch the lower cabinet.

Oak Hill House School

Kerm is Oak Hill House School's first recipient of the Cardin Scholarship. While at Oak Hill House, he completed his senior year at our school while taking a few classes at Hagerstown Community College where he also played collegiate baseball for the team. Kerm is currently a freshman at Fairmont University and he just got hired as the Assistant Baseball Instructor at Fairmont University, where he trains with the team and is preparing to play next season. Kerm maintains regular contact with our program and recently began learning to cook meals for his friends at school. Hat's off to Kerm!



Oak Hill House



Kennedy Krieger

Kennedy Krieger School Programs

This spring, 28 high school athletes from Kennedy Krieger High School's Academy 3 program competed in the Special Olympics of Maryland at Coppin State University. After completing an intense training program in a very

short period of time, our high school athletes demonstrated that they were focused on the task at hand when they were given the opportunity to participate in their track and field events.

"This was a wonderful opportunity for our students to showcase their hard work and athletic skills. Our students were able to build and practice their confidence, sports skills, and good sportsmanship," said Kelly Evans, Special Olympics coordinator and licensed professional counselor at Kennedy Krieger High School.

One of the many success stories from our Special Olympics student group is senior Mason Surhoff. Mason's family cheered him on from the stands at the Special Olympics competition. "It's the most exciting thing he does," said his mother Polly. "It's truly wonderful he can compete with all these special athletes."

All of our students competed in traditional track and field events, as well as adapted activities developed for this competition. Our Special Olympics program is only possible with the dedication and generosity of our own staff volunteers and the many hours they worked with our students. In 2013, Special Olympics Maryland is expecting over 900 school-aged athletes from both public and nonpublic schools in celebration of the 40th anniversary of these games.

St. Elizabeth School

Practice, persistence, and determination paid off for motivated St. Elizabeth School students Matt Weingram, Kamal Williams, Kahlid Harvell, and Jesse Carrico, who were recently spotlighted in the October issue of *Runner's World* for their successful completion of last fall's Baltimore Marathon Team Relay.

Their inspiring story began the summer of 2011 when these four motivated students trained alongside SES Principal Andy Parsley and staff Ed McAnulla, Mike Myers, Mike Sunderhaus, and Scott Tomlin; it culminated with last fall's running victory. "When I run, I feel like I can do anything," stated Carrico who, along with his team mates, have inspired others throughout the United States. As one *Runner's World* reader posted "I read this and cried with admiration for these young men," while

another reader wrote "Beautiful! This is a great example to never give up." Be sure to visit www.runnersworld.com for the complete story.



St. Elizabeth



Gateway School

**Creativity
Spotlight**

Gateway School

Magical Experiences Arts Company Establishes Residency at Gateway School

Funded by a Maryland Arts in Education matching grant, Magical Experiences Arts Company (MEAC) has established a nine-month residency at **Gateway School**. For the duration of the 2012-2013 academic year, two MEAC artists will visit Gateway each month and engage students in an interactive, sensory performance that lasts for approximately one hour. The goal of the program is to develop communication and self-expression skills.

Founded in the United Kingdom in 1986, MEAC performs 120 sessions each year throughout the state of Maryland. The theater company provides interactive performances to children, adolescents and adults in a safe, nurturing environment, allowing individuals with disabilities full access to the arts.

Students Featured on MOBTOWNmoon Album

The students of Gateway School will be featured on the album **MOBTOWNmoon**, a reinterpretation of Pink Floyd's groundbreaking "Dark Side of the Moon," featuring Baltimore-based musicians. Musicians and co-creators Sandy Asirvatham and ellen cherry selected five sound clips that were submitted to the Baltimore Soundscape Project for inclusion. A sound clip recorded by Gateway School students during a special super hero pep rally was one of the five winners. Learn more at www.mobtownmoon.com

SCHOOL News



Auburn School

Auburn School

Composting

Students at The Auburn School - Baltimore Campus have taken on a composting venture with the goal of using the soil that is produced to plant a garden in the spring. A science educator and farmer from Kayam Organic Farm in Reisterstown visited to initiate the project. Exploring a variety of different soils and beginning a collection of table scraps from lunch was combined with learning how to add the proper nutrients to the tumbler to facilitate the decomposition process.



Gateway School

Chelsea School Students Adapt Open Source Software Appliance

Students in Chelsea School's advanced technology pathway for Information Systems Management, under the direction of instructor Rik Goldman, played a role in the adaptation of new software appliances for Turnkey Linux. The Turnkey Linux Virtual Appliance Library is an open source project that develops a free virtual appliance library of pre-packaged servers based on the Debian operating system that can be deployed on virtual machines, in cloud computing infrastructures or installed in physical computers.

Over the past few years, students and faculty have created "turnkey" versions of complex server software and submitted them for consideration and ultimately adoption and publication by Turnkey Linux. With their latest release in September, Chelsea School submissions became official Turnkey Linux appliances.

The diversity of software platforms such as Mahara, Omeka, Sahana Eden, and LimeSurvey, which were adapted by the students and faculty, illustrate the range of uses for these appliances. Mahara is an electronic portfolio and social networking tool adapted by students Steven Robinson, Maurice Quarles, Curtis Fawcett, and David Walton. This open source software is currently used by Chelsea School students to create and maintain electronic portfolios. Omeka, adapted by Chelsea School teacher Sabre Goldman, is a standards-based web-publishing platform for the display of library, museum, archives, and scholarly collections and exhibitions. Sahana Eden, an Emergency Development Environment platform for rapid deployment of humanitarian response management, was adapted by Rik Goldman and Steven Robinson. LimeSurvey, adapted by Curtis Fawcett and David Walton, is a user-friendly web application that enables users to develop and publish surveys, and collect responses without doing any coding.

These projects came about through Mr. Goldman's commitment to authentic assessment, which pushes students to develop solutions and strategies for real-world problems. In Mr. Goldman's classes, students do not create theoretical or hypothetical models, they produce workable, publishable products that not only demonstrate what they've learned, but also are of use and value to the community.

SCHOOL News

Diener School



The Diener School

We often ask ourselves as educators, what is it we want our students to learn? What are our objectives and goals?

As educators at Diener, we have the luxury to go deeper, to question the intent of our methods and instructional strategies. What will our students, this delicate population of children, need for their future? What are the tools they will need to be independent and productive community-minded thinkers, problem solvers and citizens? What is the best way to teach so skills, information and knowledge "stick"?

It is evident to me, even in our very first week of school, our teachers have planned lessons and are using strategies because they have asked themselves and each other those very important questions. In just one week, I have observed students working together to solve problems. I have witnessed students learning by doing; using their bodies, their hands and their minds to participate in activities and solve problems.



Diener School

For example, our three upper school classes participated in a group activity with piping and balls. The objective was for students to work together to get the ball(s) through the pipes and into a small cup on the other end of the room. Each child had to participate and follow some very strict rules. If the ball dropped, the students had to start over. This was not an easy task; it was one that required communication, collaboration and cooperation!

After this activity, students discussed what was easy, what was hard, the virtues and teamwork they used to complete a difficult and challenging task. We also asked our students, "How does it feel to take on a challenge? Was it helpful to work together? Could you have completed this task (even if modified) alone?"

These rich, thoughtful lessons and activities will build curiosity, skills and knowledge which will benefit our students (and teachers) for a lifetime!

High Road Schools

Celebrating 10 Years

The 2012-2013 school year marks the 10 year anniversary for three High Road School programs in the state of Maryland, including High Road Upper School of Prince George's County (Beltsville, MD), High Road Academy of Prince George's County (Lanham), and High Road School of Southern Maryland (La Plata).

These programs were opened as part of an expansion in the Prince George's County/D.C. Metro area to meet the increasing needs of students with specialized needs in the area. Since then, all three programs have expanded into new state of the art facilities with a focus on transition/vocation, technology and community.

The three programs in Beltsville, Lanham and La Plata, will be celebrating and commemorating their 10 year anniversaries with programs and events throughout the year.



The Forbush School at Glyndon

Science Fair - Would you like to know which microwave popcorn pops the most kernels? How about which mouthwash is the most effective? Can you taste the difference between brand name soda and generic soda? Do you know what type of soil is best for growing plants? Have you ever preserved fruit? You could have learned about all of these topics and much more at the 1st Science Fair on the Forbush @ Glyndon campus. The science fair was held on August 10, 2012, and was a huge success.

All students in grades 2-8 participated, as well as the students in a self-contained 9th grade classroom. Students learned to think like a scientist and answer a question using the scientific method. We were honored to have such esteemed judges as Vicki Almond, Baltimore County Councilwoman for District 2; Tony Baysmore, from the Baltimore County Office of Community Outreach; and Jessica Harris from the Space Telescope Science Institute. The students did an excellent job explaining the details of their project results to the judges. Parents and family members enjoyed visiting the science fair and learning about our science program. This event was followed by our Annual Ice Cream Social.



The Harbour Schools

Find it at the Gap

The Harbour School at Annapolis transition students worked at the Gap in the Westview Mall in Annapolis. Each student got to style his/her mannequin for the front window. The windows will remain up through the weekend. The Gap gave each student a Gap shirt and treated them to lunch. The day was part of the retailing experience for the transition program.



Harbour School

Celebrating Sukkot in a Sukkah

Students at The Harbour School at Baltimore learned about a Sukkah for the Jewish holiday of Sukkot. Rabbi Dinovitzer from the Talmudical Academy of Maryland made the presentation. He explained that this is the Jewish festival of thanksgiving and that meals are traditionally eaten in a Sukkah. Rabbi Dinovitzer and his children put up the Sukkah at the school and children experienced eating outdoors.



Teaching Tech to Teachers

The Harbour School has an iPad for every student. Stephanie Gentry, middle school math teacher at The Harbour School at Annapolis, is presenting at two conferences, "Common Core: Tech or Treats" and "Click or Swipe: How to Power up Your Learning." At each conference, Ms. Gentry is teaching about math fluency, using QR codes to differentiate math instruction and using apps to enhance instruction and align curriculum. Ms. Gentry is an experienced math teacher and excels at individualizing instruction.



Oak Hill House School

First Annual Oak Hill House & School "Swing-A-Thon" Charity Golf Tournament

We just recently held our First Annual Oak Hill House & School "Swing-A-Thon" Charity Golf Tournament at the Forest Park Golf Course in Baltimore on September 28, 2012. We'd like to thank Senator George Edwards, Senator Don Munson, Nike Factory Stores in Hagerstown and Arundel Mills, Haggar Clothing, UNO's Chicago, Capital One Bank, Irvington Florist, GSG Accounting Firm, 92Q Jams Radio Station, The Baltimore Comedy Factory, The Washington Wizard's & Mystics, Accent Imaging, CopyQuik and a host of other donors, volunteers and supporters. See you next year!



The Forbush School at Prince George's County

New Work Sites for Our Transition- Aged Students

The Forbush School at Prince George's County is proud to announce the new work sites for our transition-aged students. We have teamed up with Buffalo Wild Wings, T.J. Maxx and Office Depot to complement our vocational curriculum. The students have the opportunity to visit Buffalo Wild Wings in Bowie twice a week and WORK (non-paid, volunteer experience)!

The students arrive at 9:30 a.m. and prepare the restaurant to open for the day. Some of the tasks that the students complete are filling the ice machines, taking the chairs down, folding napkins, refilling ketchup bottles and stocking the tables with salt, pepper, and sugar. The students working at Buffalo Wild Wings wear jerseys (uniforms) just like any other staff at the restaurant. Our students have perfect attendance at their worksite; they are always at school and on time when they are scheduled to work. We receive nothing but good reports from the staff at Buffalo Wild Wings and it encourages our students to comeback each week. As our students are aging out of the program, the experience they are receiving at Buffalo Wild Wings will never be forgotten. It is giving them the opportunity to understand what will happen in a real workplace in their near future.



Ivymount

SCHOOL News

Ivymount

Ivymount Student Interns are Featured in National Zoo Keepers Journal

In the spring of 2011, two Ivymount Post High School students began an internship at Lemur Island at the National Zoo. Their jobsite host contact, Melba Brown, Primate Keeper at the National Zoo, wrote an article about her amazingly positive experience with the Ivymount students and the project for the February 2012 issue of *Animal Keepers' Forum* (the journal for the American Association of Zoo Keepers).

In addition, their research paper: "Part II - Lemur Island Enrichment" appeared in the *Animal Keeper's Forum* online. Their study focused on the enrichment effects on lemur behavior and exhibit visibility, and listed both Ivymount student interns Thomas Morere and Lawrence Anderson, as well as their Ivymount job coach, Jane Steil, in the study's credits.

At the 2012 American Association of Zoo Keepers (AAZK) National Conference last month, all four were awarded the AAZK Excellence in Journalism Award for these two articles.

The National Zoo has been an Ivymount jobsite host for our Post High School students for several years.



Hannah More School

Hannah More School to Merge With Sheppard Pratt Health System

Hannah More School, which provides individualized academic, vocational and therapeutic programs to students whose needs require a specialized school setting, has announced that, effective November 1, it will become a part of Sheppard Pratt Health System. Hannah More School's name and school leadership will remain the same, and the school will continue to operate in its current locations.

President and CEO Mark Waldman said, "This is a wonderfully exciting opportunity for Hannah More, and with the resources available to us through Sheppard Pratt, we will be able to strengthen the breadth and depth of services we offer to our students. By combining our resources, expertise and complementary services, this will be a very positive merger for both of us and benefit our students and our school well into the future, allowing us to continue to provide the high quality of service we have delivered over the past 35 years."

The main campus of Hannah More School has been located in Reisterstown since 1978, serving students from 6th to 12th grade with autism, Asperger syndrome and other learning disabilities. In addition to its Reisterstown campus, Hannah More School operates three Type II schools within public schools in Anne Arundel County. Currently Hannah More serves 150 students.

President and CEO of Sheppard Pratt Health System, Dr. Steven Sharfstein, commented on the merger, "Hannah More is one of the most highly regarded therapeutic day schools in Maryland and we are delighted to welcome the students and staff of Hannah More into the Sheppard Pratt family of schools. We are both mission-driven organizations and our goal in coming together is to strengthen all of our programs so that we can continue to focus on the needs of our students."

Sheppard Pratt Health System currently operates 12 non-public special education schools for children and adolescents with emotional disabilities or autism, educating close to 600 students in seven Maryland jurisdictions. With the addition of Hannah More School's programs, that number will increase to 16.

Congratulations to Hannah More Scholarship Winners!

Congratulations to the winners of the following scholarships, which were awarded at the June 11 graduation ceremonies:

Arthur Kauffman Memorial Scholarship: Nia Dobbs
Martin J. Smith Summer Scholarship: Daniel Graham
Martin J. Smith "HMS" Scholarship: Anton Bynum
Rev. Frederick J. Hanna Scholarship: Asia Arthur
Stephen W. McNierney Scholarship: Noah Pagano

**SHEPPARD
PRATT
HEALTH
SYSTEM**

SP

RAVENS ACT FOUNDATION

School Receives Grant from Ravens Foundation

Our school was recently awarded \$4,450 from the Baltimore Ravens All Community Team Foundation's Plan in Motion project to purchase new uniforms for our sports teams and a Smith machine for our physical education program. We are extremely grateful to the Baltimore Ravens for this grant!

Jefferson School at Finan Center

On the Move

Price Pritchett, author and business advisor, wrote, "Change always comes bearing gifts." Since 1999, the Jefferson School at Finan Center had been located in Cottage A. In April of this year, it was time to move the school to the former location of the Brandenburg Center. The new space offers a courtyard, a basketball court, expanded computer lab, and increased classroom sizes. In addition, the math and science wing was gifted a much needed lab for students to experience those subjects hands-on. There has even been a substantial impact on behavior, as major incidents are down 48 percent over the same time frame last year.



Jefferson School

Linwood Center, Inc.



Linwood Center

Groundbreaking Ceremony For New School Facility

On September 12, Linwood Center hosted the official groundbreaking ceremony for our new school facility. We are grateful for the generous support of County Executive Ken Ulman, Delegate Guy Guzzone, Senator Jim Robey, and the entire Howard County delegation. The new 35,000 square foot, state-of-the-art school, will open its doors in the fall of 2013. This new school will increase the capacity of Linwood from 28 to 70

students. Linwood Center has been serving the needs of individuals with autism since 1955 and "creating the possibility of extraordinary lives."

Katherine Thomas School

Students Thanking our Veterans

On November 11, local veterans will receive thank you cards from The Katherine Thomas School's students through a community partnership with GEICO employee and American Legion member Beverly. KTS students are learning about Veteran's Day by making cards to thank our veterans. Mrs. Hartley's 2nd and 3rd grade class read, "Don't Forget, God Bless Our Troops," by Jill Biden, to gain perspective of children and parents who are separated due to military service. Beverly's American Legion unit, Francis Scott Key Unit #11, takes on an annual project to thank area veterans for their service. This year, KTS was proud to provide the artists!



Katherine Thomas School

The Pathways Schools

Prince George's County-Pathways Kindergarten Partnership

The Pathways Schools has a history of collaboration with Prince George's County Public Schools (PGCPS), so it was not surprising that the school system turned to Pathways when a growing number of new kindergarten students exhibited significant behavior problems during the school day. The public schools needed to work with a provider that had the experience and flexibility to respond quickly and effectively to help these young and struggling students succeed in the least restrictive environment.

The result is the Prince George's-Pathways Kindergarten Partnership, a collaboration supported by the Maryland State Department of Education (MSDE). The partnership program is coordinated by an experienced, licensed clinical social worker from Pathways, assisted by a special education professional. The Pathways team will travel where they are needed, helping children acquire strategies to cope with their emotional challenges, assisting teachers to develop positive behavior interventions, and enabling families to find and use all the services and resources available to them in the public school system.

(410) 938-4413

www.mansef.org

Mann Residential School

Spirits Run High at Mann Residential School

Mann Residential School wasted no time getting into the new school year with lots of spirit. Our Homecoming event took place on September 21 and we had a blast! One of the infamous Harlem Globe Trotters, Mr. Choo, set the pace with an inspirational speech delivering the message that, "If we believe, we can achieve!" Students, families, and faculty went head-to-head in a dribbling contest, a three-point contest, and then wrapped up the day with a faculty and student basketball game refereed by Mr. Choo himself. The Black Outs versed the White Sox in a close scoring basketball game, 67-64, with the White Sox on top. The Black Outs were in the lead until the last few minutes of the game when the White Sox made a comeback and swept the game with a three point lead. Mr. Weldon Christopher, coach of the Black Outs stated, "It is not about winning or losing, but truly about the experience." The coach of the White Sox team, Mr. Rashon Pierce, shared, "Winning isn't everything, but it sure feels good. We believed and we achieved!" What a day!



Mann Residential

New Playground for LEAP



Kennedy Krieger

Kennedy Krieger School

New Playground for LEAP Program

In June, after four years of planning and fundraising, a new playground was installed for the students in Kennedy Krieger School's LEAP Program in Baltimore. Michael Delia, Educational Director, and Susan Schaffer, Manager of Occupational Therapy services for Kennedy Krieger School Programs, chaired the committee that worked with Playground Specialists, a company which designs and installs outdoor recreation areas, to custom-design this state-of-the-art playground. This area was developed especially for the unique needs of students aged five through twenty-one on the autism spectrum. It was designed to promote fun, fitness, safety, multi-sensory exploration, social interaction and learning. The playground includes:

- Quiet areas for students who are easily overstimulated, such as a tunnel and a picnic table with umbrella. Some movement equipment items are deliberately isolated from others for students who need their own physical space.

- Equipment designed for individual use, for pairs of students or for groups.

- Areas that provide a wide variety of devices for many types of movement (rotary, climbing, hanging, jumping, sliding, swinging, crawling, balancing) that the students crave for sensory input and regulation.

- Tactile, auditory and manipulative equipment, including sand and water table and exploratory-multi-sensory panels.

Visual cues in the form of color and pictures are included to assist students in identifying specific areas of interest. The linear set up of the connected items is designed to assist students with exploring and moving through various items. The perimeter is designed to assist with walking as a conditioning activity and is set in a different color to provide visual cuing that is an important avenue for those with autism. The safety surfacing is a composite material that is safe, spongy and maintenance-free.

Multi-disciplinary teams are working together to facilitate social skill development through fitness and fun on the playground.

From the opening moments of the playground, the students, as well as the staff, have experienced the exhilaration of movement, play and exploration. The playground gets a big "thumbs up" from our students!

MARK YOUR *Calendar*

Maryland Transition Conference

**Saturday, November 17, 2012 • Comfort Inn & Conference Center
Bowie, MD**

Save the date for this year's transition conference scheduled for Saturday, November 17, 2012, at the Comfort Inn and Conference Center in Bowie, MD. The program this year will be directed to youth with disabilities and their families. Please check the Maryland Transitioning Youth website at www.mdtransition.org periodically for updates, including registration.

MANSEF Clinical Network - 2012-2013 School year

Thursday, November 15, 2012

Title: "Working with Adolescents with Multiple Complex Trauma, including Physical and Emotional"

Time: 9 – 11 a.m.

Location: TBD

Thursday, February 21, 2013

Title: "Revisiting and Understanding Mood Disorders"

Time: 9 – 11 a.m.

Location: TBD

Thursday, April 18, 2013

Title: "The Economy and its Impact on our Students and Families"

Time: 9 – 11 a.m.

Location: TBD

Please contact Paul Kaplan at pkaplan@hannahmore.org or 410 526-5000, ext. 622, for details on the location of these sessions.

NOTE: Attendees will receive a certificate of attendance for 2 Category I CEU's for each session.

SAVE THE DATE



2013 Conference

Friday, November 1, 2013

Baltimore Convention Center

Over 2,000 special education professionals will convene for a full day of workshops covering topics that focus on providing a continuum of services for Maryland students with disabilities.

Check the MANSEF website
frequently at

www.mansef.org

for updates and more details

Call for Presenters

As in the past, we are looking for people willing to donate their time to present workshops related to topics that would be informative and applicable to our audience. Workshops will be scheduled for one and a half hours in morning and afternoon sessions and you may present at either session or both.

Interested?

Contact Joyleen Hamilton at
410-938-4413
or MansefAssistant@aol.com

MANSEF warmly welcomes Dr. Lillian Lowery as Maryland State Superintendent

Dr. Lowery takes the helm of the nation's number one-ranked state school system following nearly three years as Delaware Secretary of Education. The State Board confirmed Dr. Lowery's appointment in April, and she has signed a four-year contract as State Superintendent. Dr. Lowery has already started scheduling a series of public meetings to listen and learn from education, parent, civic, legislative, and other public and stakeholder groups.

"Maryland has an outstanding education system, and I am looking forward to working with its wonderful educators as we continue to move the state in a positive direction," said Dr. Lowery. "Our goal is to make certain our schools prepare all of our children for the needs of the 21st century. The world demands it, and our children deserve no less."

Dr. Lowery has distinguished herself by facilitating broad-based statewide strategic planning which resulted in Delaware being selected one of the first states to be awarded the federal Race to the Top grant. She has led the efforts to establish Teacher and Leaders Effectiveness Units as well as Turnaround Units within the State Department, which have assisted in the implementation of the grant and the improvement of instructional opportunities for students.

Prior to serving as the Secretary of Education in Delaware she served as an Assistant Superintendent in Fairfax County, Virginia, and an Area Administrator in Fort Wayne, Indiana. Other administrative experiences have included serving as both an assistant principal and principal at the high school level, and as the Minority Student Achievement Monitor. In addition, she taught English at the middle and high school levels in Virginia.

Dr. Lowery holds a Doctorate of Education in Educational Leadership and Policy Studies from Virginia Polytechnic and State University, as well as a Masters of Education in Curriculum and Instruction from University of North Carolina, and a Bachelor of Arts in English and Secondary Education from North Carolina Central University. She is also a nationally known speaker and recognized as a leader among chief state school officials.



MANSEF is committed to creating optimum educational opportunities in the least restrictive environment for all Maryland children with disabilities through: **ADVOCACY, NETWORKING, COLLABORATION and INFORMATION/RESOURCES.**



6501 North Charles Street
P.O. Box 6815
Baltimore, Maryland 21285-6815